

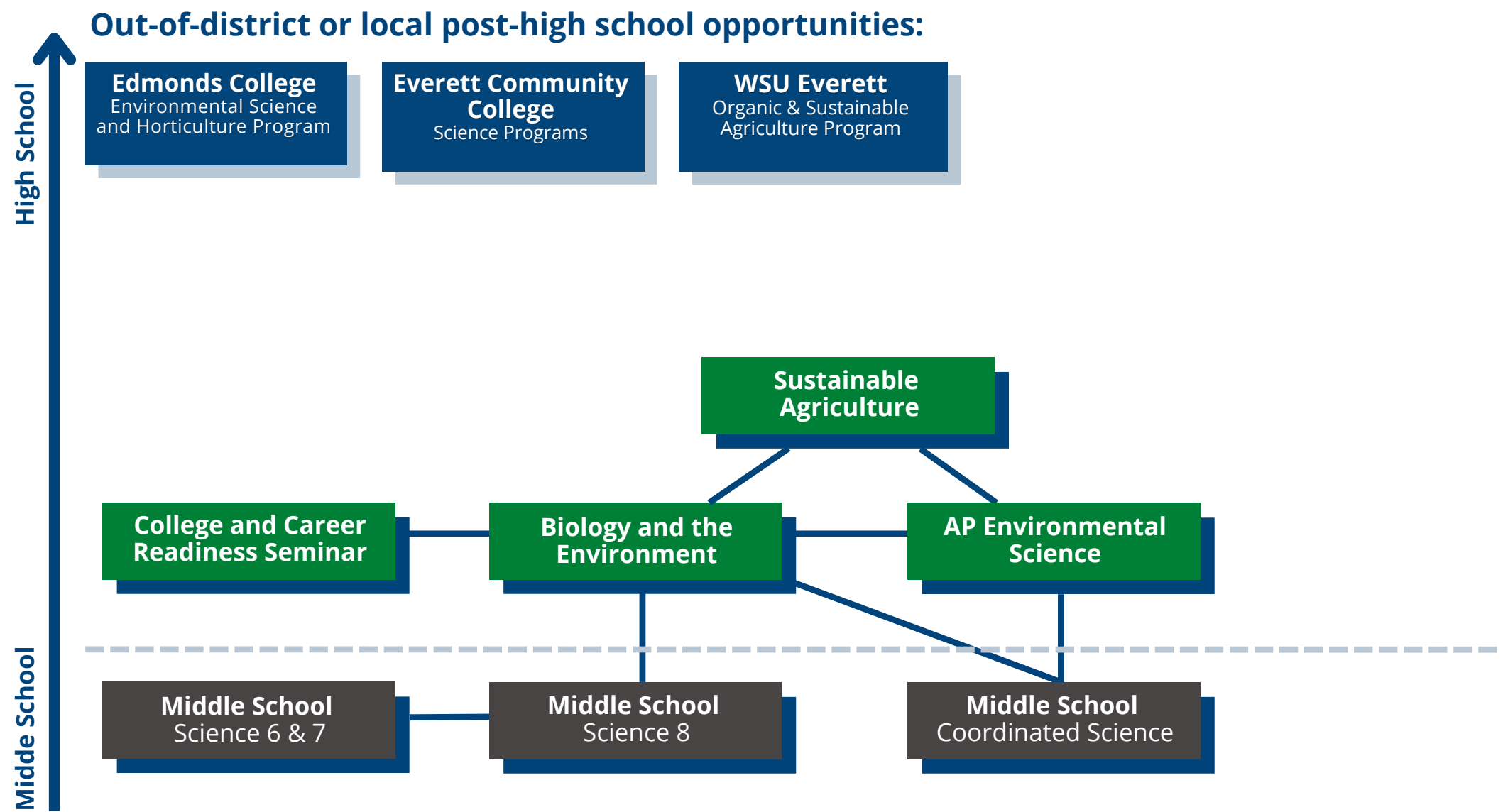
# Everett Public Schools CTE Graduation Pathways



## Agriculture Education & Science Graduation Pathway

Contains Energy & Sustainability Courses

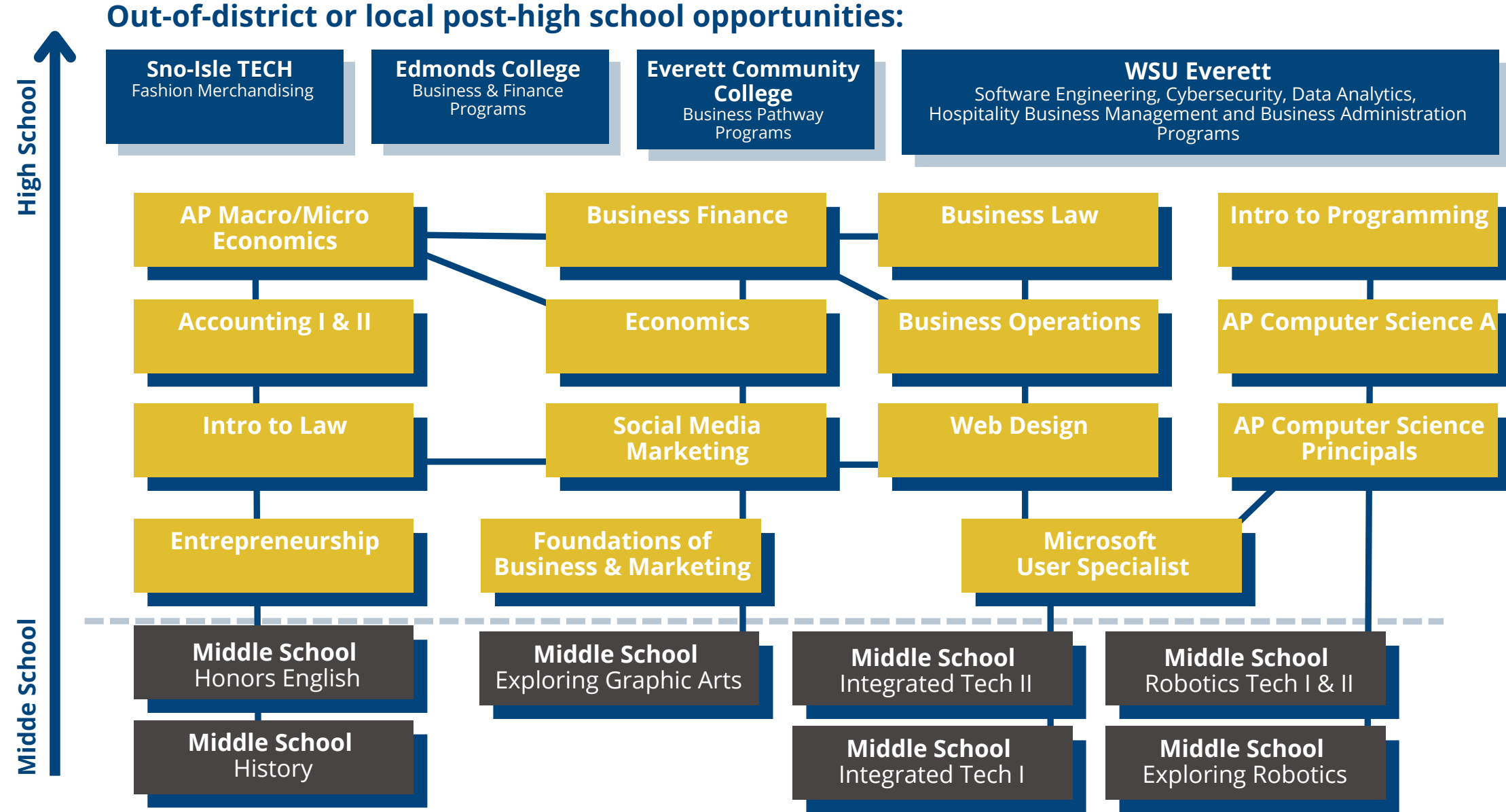
In your High School & Beyond Plan, if you have selected a CTE graduation pathway, you must earn 2.0 credits in that pathway. For **Agriculture Education & Science**, choices below are indicated in **green**. This will meet CTE math and ELA graduation requirements.



## Business & Marketing Graduation Pathway

Contains Business & Professional Services and Communication & Information Technology Courses

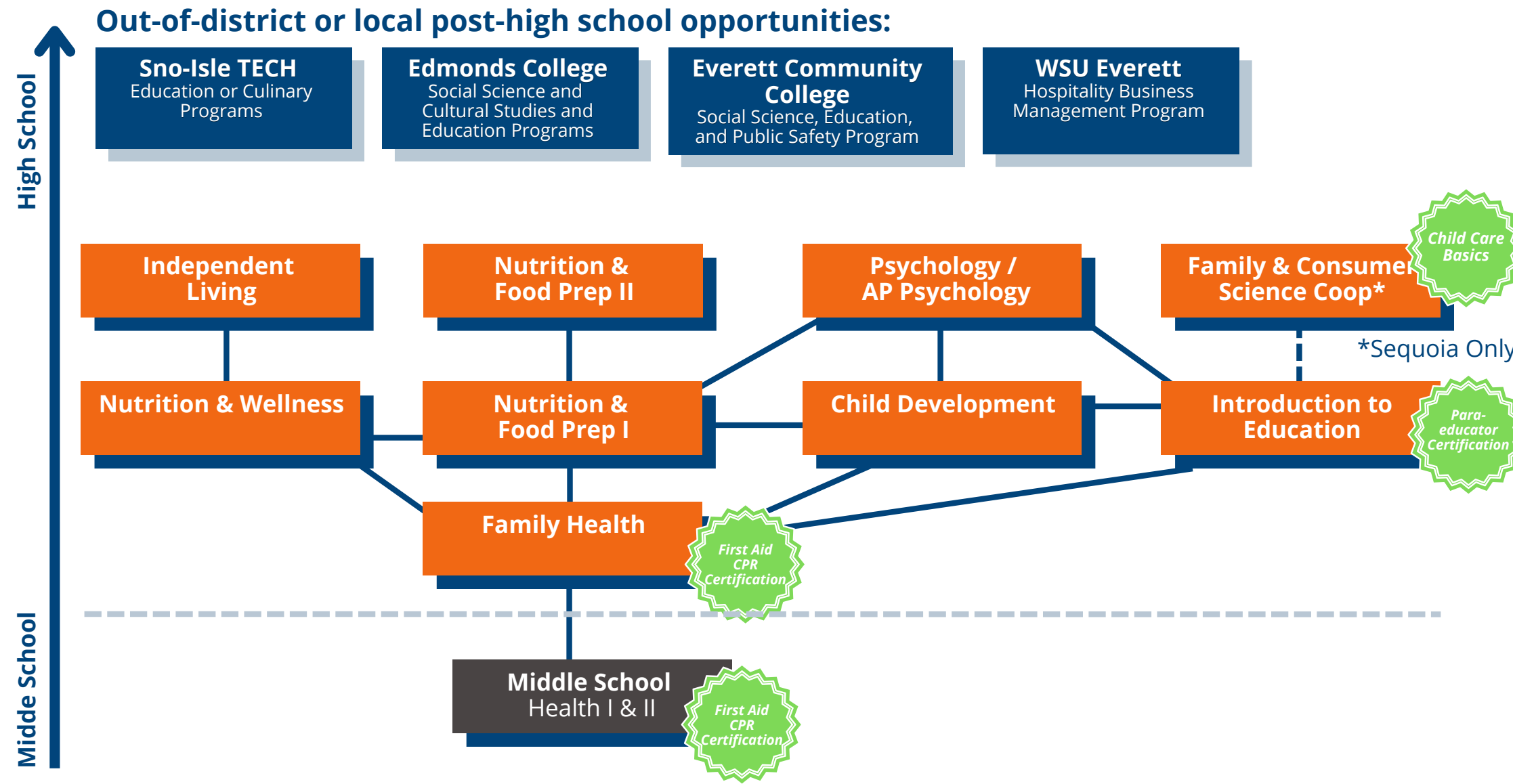
In your High School & Beyond Plan, if you have selected a CTE graduation pathway, you must earn 2.0 credits in that pathway. For **Business & Marketing**, choices below are indicated in **yellow**. This will meet CTE math and ELA graduation requirements.



## Family & Consumer Sciences Graduation Pathway

Contains Family & Consumer Science and Education Courses

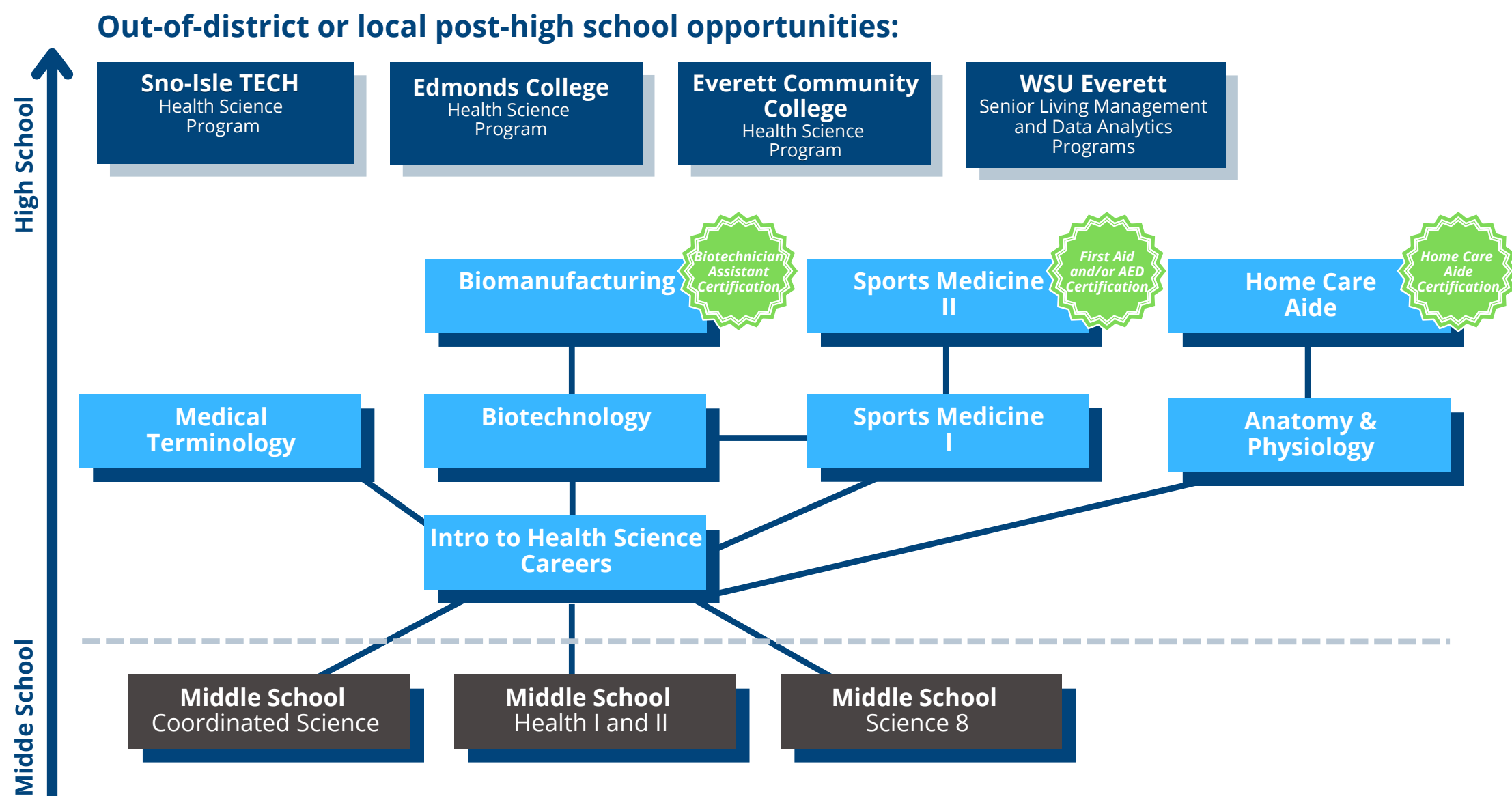
In your High School & Beyond Plan, if you have selected a CTE graduation pathway, you must earn 2.0 credits in that pathway. For **Family & Consumer Sciences**, choices below are indicated in **orange**. This will meet CTE math and ELA graduation requirements.



## Health Sciences Graduation Pathway

Contains Health Science & Medical Careers Courses

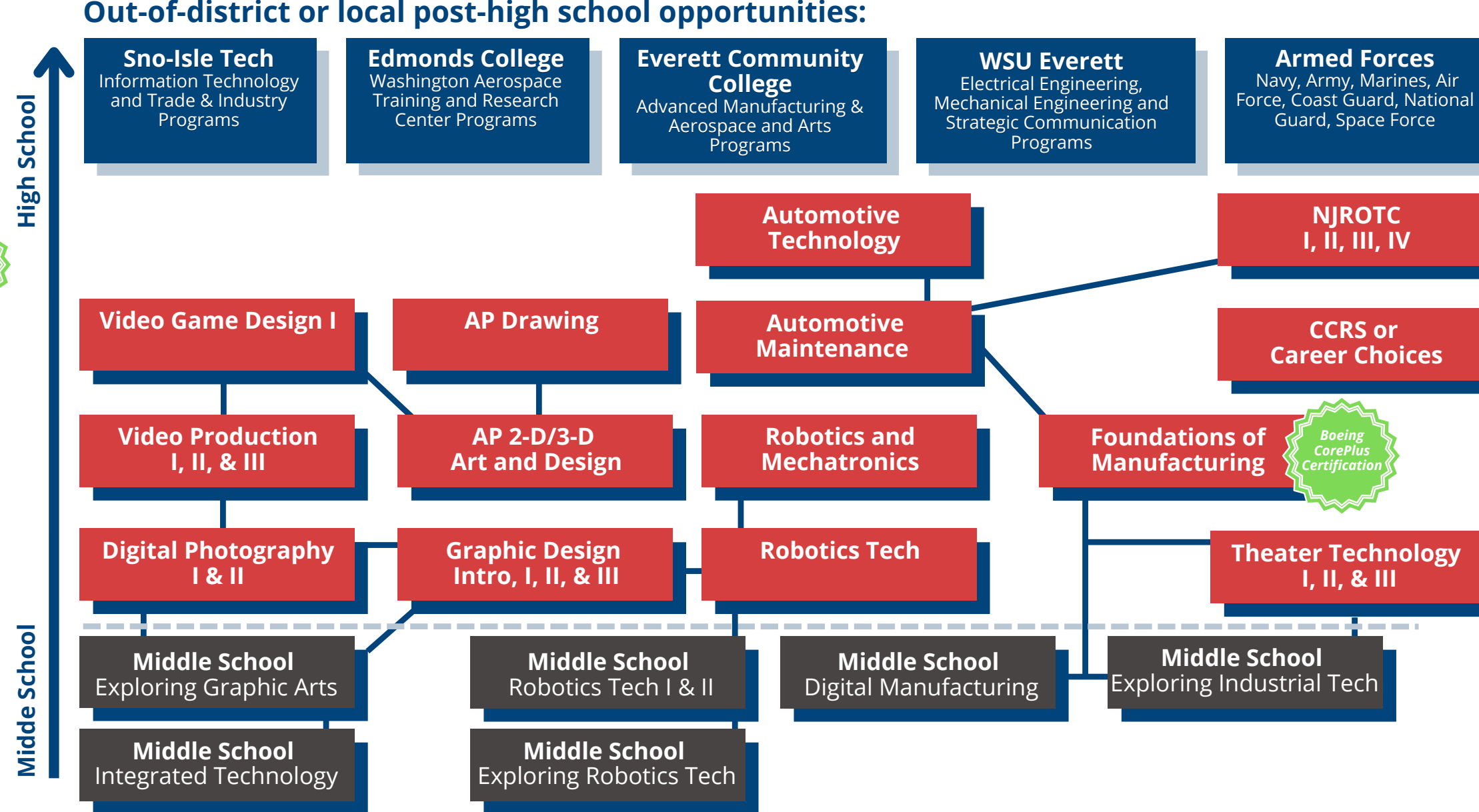
In your High School & Beyond Plan, if you have selected a CTE graduation pathway, you must earn 2.0 credits in that pathway. For **Health Sciences**, choices below are indicated in **blue**. This will meet CTE math and ELA graduation requirements.



## Skilled & Technical Sciences Graduation Pathway

Contains Engineering & Advanced Manufacturing and Communication & Information Technology Courses

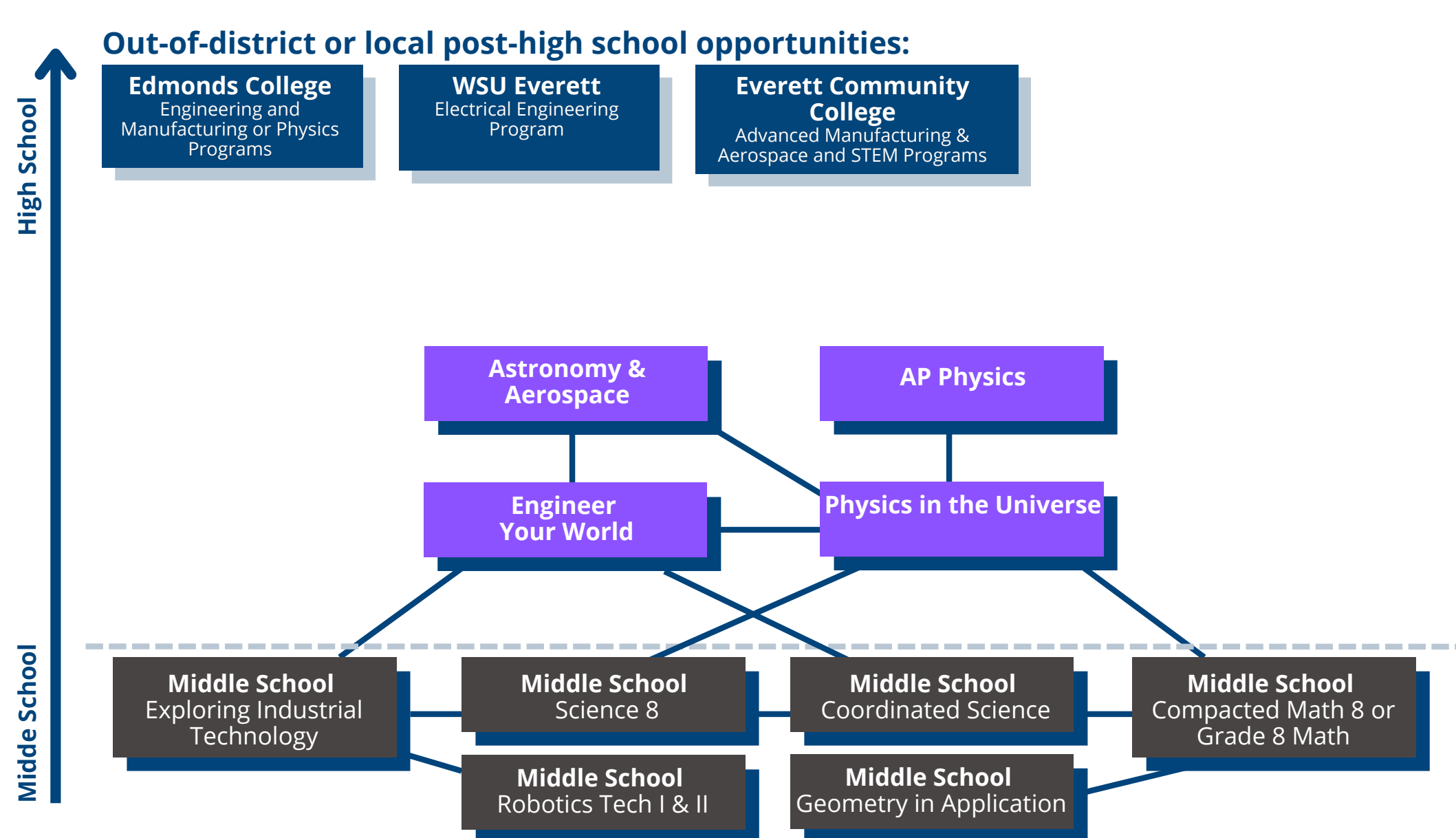
In your High School & Beyond Plan, if you have selected a CTE graduation pathway, you must earn 2.0 credits in that pathway. For **Skilled & Technical Sciences**, choices below are indicated in **red**. This will meet CTE math and ELA graduation requirements.



## STEM Graduation Pathway

Contains Engineering & Advanced Manufacturing Courses

In your High School & Beyond Plan, if you have selected a CTE graduation pathway, you must earn 2.0 credits in that pathway. For **STEM**, choices below are indicated in **purple**. This will meet CTE math and ELA graduation requirements.



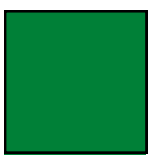
## CTE Graduation Pathways Color Code



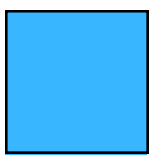
Skilled & Technical Sciences



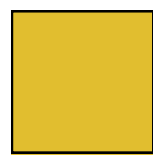
Family & Consumer Sciences



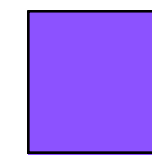
Agriculture Education & Science



Health Sciences



Business & Marketing



STEM

Everett Public Schools does not discriminate in any programs or activities on the basis of sex, race, creed, religion, color, national origin, age, veteran or military status, sexual orientation, gender expression or identity, disability, or the use of a trained dog guide or service animal and provides equal access to the Boy Scouts and other designated youth groups. The following employees have been designated to handle questions and complaints of alleged discrimination: Title IX/Civil Rights Compliance Officer: Kevin Allen, 425-385-4100, KAllen@everettsd.org, PO Box 2098, Everett WA 98213 Section 504 Coordinator: Dave Peters, 425-385-4063, DPeters@everettsd.org, PO Box 2098, Everett WA 98213 ADA Coordinator: Randi Seaberg, 425-385-4104, RSeaberg@everettsd.org, PO Box 2098, Everett WA 98213